



SWAMI VIVEKANAND
SUBHARTI
UNIVERSITY
Approved by UGC
Where Education is a Passion



DESIGN Castle 2026

Annual Fashion Show
Alchemy of Tones

Model: Shaurya Bhardwaj, Sneha Semwal

Nandlal Bose
Subharti College of Fine Arts & Fashion Design

It's Association As An
Institutional Member of

fDCI
FASHION DESIGN COUNCIL OF INDIA

Glimpse : Design Castle 2025





Mrs. Stuti Narain Kacker

Chancellor
Swami Vivekanand Subharti University

It gives me immense pleasure and pride to witness our budding designers from the Department of Fashion & Textile Design at Swami Vivekanand Subharti University, Meerut, present their creative expressions at Design Castle 2026. This annual event serves as a valuable platform for students to showcase and refine their skills, explore innovative ideas, and express their artistic vision through fashion. I firmly believe that such initiatives play a significant role in nurturing creativity and preparing students to excel in the ever-evolving fashion industry, in India and abroad. I extend my heartfelt best wishes for the grand success of this event and congratulate the organizing team for their dedicated efforts. I am confident that our students will continue to achieve remarkable milestones in the future.



Prof. (Dr.) Pramod Kumar Sharma

Vice Chancellor
Swami Vivekanand Subharti University

It brings me great pride and satisfaction to see our young designers showcase their talents at Design Castle 2026. This event stands as a testament to the creativity, dedication, and hard work of our students and faculty. Design Castle provides an excellent learning platform where students gain practical exposure and the opportunity to present their work to a wider audience, including industry professionals. Such experiences are instrumental in shaping them into confident and competent designers of the future. I extend my best wishes to all participants and congratulate the Department of Fashion & Textile Design for organizing this commendable initiative.



Prof. (Dr.) Shalya Raj

CEO
Swami Vivekanand Subharti University

I am delighted to learn that Nand Lal Bose Subharti College of Fine Arts and Fashion Design is organizing the Design Castle 2026, the Graduating Fashion Show, on 10th April 2026 to commemorate and showcase the journey of graduating students. The optimism of the vibrant college life stays with a person forever as a sense of accomplishment. We at Subharti have always ensured limitless opportunities to explore personal interests and extracurricular activities. I would like to acknowledge the laborious efforts being put in by Dr Pintu Mishra and his diligent team for compiling a catalogue that will feature all the student collections. Finally, I wish all the graduating students the Best of everything in their life today, tomorrow and always. Let's sign off with a solemn promise that as an alumni of this prestigious Subharti University, you will uphold the core values and traditions of your alma mater while in return your alma mater will always back you with the best available expertise and resources required in defining and shaping your future.



Prof. (Dr.) Pintu Mishra

Dean & Principal, NBSCFF
Swami Vivekanand Subharti University

The Department of Fashion and Textile Design proudly presents Design Castle 2026, an inspiring initiative that continues to provide an exceptional platform for our budding designers to showcase their creativity and innovative concepts on the runway. This prestigious annual event empowers students to translate their imaginative visions into compelling designs, reflecting both artistic excellence and contemporary relevance. It stands as a celebration of talent, dedication, and forward-thinking design. I extend my heartfelt wishes for the grand success of the show and am confident that our students will continue to achieve remarkable milestones in their creative journeys. My best wishes to the entire team and all the participants for a truly outstanding presentation.

Éclat Élégante is a formal office wear collection inspired by the elegance and sharp dressing style of Dandy fashion. The designs focus on clean tailoring, structured silhouettes, and classic suiting fabrics for both men and women. A refined neutral colour palette adds sophistication, while gold metal buttons act as a signature detail, giving the garments a subtle touch of luxury and authority. The collection represents confidence, professionalism, and timeless style in modern workwear.

Éclat Élégante



DESIGNERS



AARYA CHAUHAN



NIDA



MITALI



SALONI



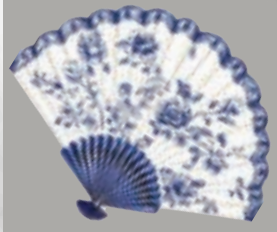




Porcelain restraint, inspired by Japanese pottery, reflects simplicity, balance, and quiet elegance. Rooted in traditional aesthetics, it embraces minimalism, natural forms, and subtle imperfections that enhance beauty. Soft, muted tones and smooth textures mirror the delicate surface of porcelain, while clean silhouettes convey calm sophistication. The influence of Japanese pottery introduces harmony, craftsmanship, and respect for materials, where every detail is intentional. This theme highlights the beauty of restraint, avoiding excess and focusing on refined design elements. It creates a serene and timeless appeal, blending fragility with strength, and celebrating understated luxury through thoughtful, artistic expression.



Porcelain Restraint



DESIGNERS



SHAILI



KAJAL SINGH



MUSKAN



RAHUL KUMAR



PAYAL





Duality unbound explores the balance between black and white lightness and darkness strength and softness

Black represents mystery and power, while white represents purity and elegance. Lace work adds delicacy, creating harmony between boldness and softness. This theme shows that opposites, don't divide. They complete each other.

Duality Unbound



DESIGNERS



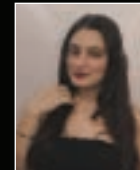
IRAM



PRAVI



RAVINA



ANUSHKA SIDHU



AYESHA



MANTSHA



KANAK



VISHAKHA

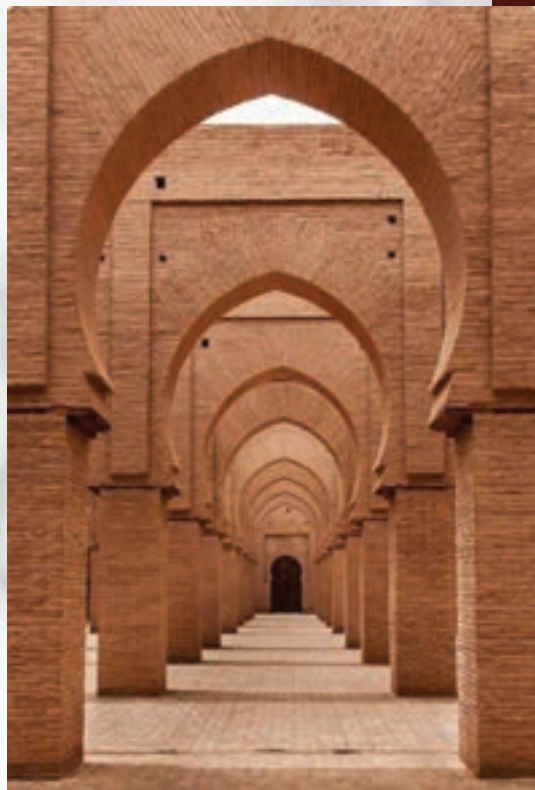


SHIVANI



Layering is more than just fashion-It is a way to express yourself. When done correctly, It not only enhance your look but also builds inner confidence. The more you experiment and find what suits you, the more confident you become. Everyone needs a source of light in their life. It can be people, knowledge or inner strength. When this light guides a person, it helps them overcome darkness and become confident. True confidence comes from within, but it grows stronger with the right source of light.

EMERGE



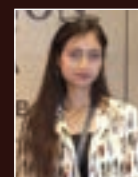
DESIGNERS



PRIYA



PRENIKA SINGH



KIRTI



MUSKAN



SHIVANI



AKSHA



"Santulan," meaning balance, is a sustainable fashion collection that blends traditional craftsmanship with innovative use of waste materials. The collection transforms waste polythene into traditional Kantha embroidery, Discarded X-ray sheets are repurposed into unique sequins, while safety pins and a deconstruction approach add a raw, experimental edge. Waste soda cans and tabs are used as bold embellishments, turning everyday waste into striking design elements. "Santulan" reflects a balance between sustainability, creativity, and cultural roots, proving that fashion can be both responsible and expressive.

Santulan



Santulan



DESIGNERS



ADEEBA SAIFI



SAHIL PANWAR



SALIM



NANDINI SINGH



SALONI



VANI SHARMA



SANDHYA



MADHU



SALISHA CHAUDHARY



YASHIKA



Aether-ee: Lluvia is a concept-driven collection inspired by the atmospheric transformation of the sky—from tranquil clarity to the dynamic release of rain. Rooted in the interplay of air, moisture, and pressure, the collection explores themes of tension, evolution, and release.

Through refined techniques such as smocking and fabric manipulation, the designs evoke fluidity, volume, and movement, mirroring the organic behavior of clouds. The collection presents a seamless transition of tone and texture, translating the emotional and physical journey of the sky into a contemporary fashion narrative

Aether-ee: Lluvia



DESIGNERS



SAMEEN



AAYUSHI



NILAKSHI



MAHI



KAVYANSHI



GAURAV



GULSHAN



SHAGUN



VAISHALI



Opus regale embodies timeless elegance inspired by powerful transformation of a diamond emerging from the coal - a journey from raw, unrefined to royalty and brilliance celebrating sophistication and grace. The collection highlights delicate craftsmanship and classic silhouette. The use of ivory symbolizes elegance and purity, while teal adds a subtle touch of freshness. It creates a graceful and majestic presence.



Opus Regale



DESIGNERS



YASHIKA CHAWLA



JANVI BANA



MEGHA



ARADHANA KAPASIYA



JANSHIKA





Step into a world where luxury is not just seen, but felt. Luxe Royal is a celebration of timeless grandeur, inspired by regal heritage and modern sophistication. Rich textures, intricate detailing, and opulent silhouettes come together to create a statement of power, grace, and unmatched style. Each ensemble reflects the essence of royalty, blending classic elegance with contemporary finesse.

A harmonious play of rich fabrics, refined craftsmanship, and bold aesthetics defines every creation. Luxe Royal is not just fashion—it is an experience of prestige, confidence, and enduring charm.

Luxe Royal



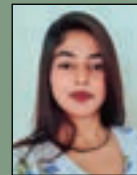
DESIGNERS



ISHIKA RASTOGI



DEEPANSHU



MANISHA



SIMRAN OJHA

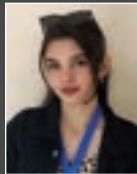


Inspired by the mythical Phoenix, the collection symbolizes transformation and rebirth. It follows Alchemy of Tones with black, gold, and greys—where black represents ashes and gold reflects strength and renewal. The silhouettes combine structure with fluid drapes, capturing the moment of rising. Waste plastic polythene is innovatively transformed into textured, feather-like elements with intricate hand detailing. The collection presents a powerful journey of turning destruction into strength and beauty.

PHOENIX: ASHES TO AURA



DESIGNERS



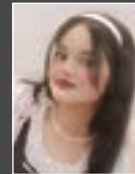
MUSKAN SHARMA



VISAKHA BANA



PREETI



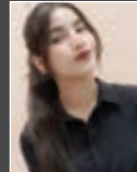
ALFIA MIRZA



MANVI



RASHI CHAUHAN



AMANTA



TANU GUPTA



SALONI



SHEETAL



KANIKA SHARMA



This collection focuses on sustainability, where students have creatively used textile waste through patchwork techniques. The garments are reversible, adding versatility and extended use. Breathable fabrics have been chosen to ensure comfort while maintaining elegance. The use of different tones of brown reflects a natural, earthy aesthetic, making the collection both stylish and eco-conscious.

Rasaantar



DESIGNERS



ALIMA



AMAN



VARSHA



RAHUL



HIMANSHI



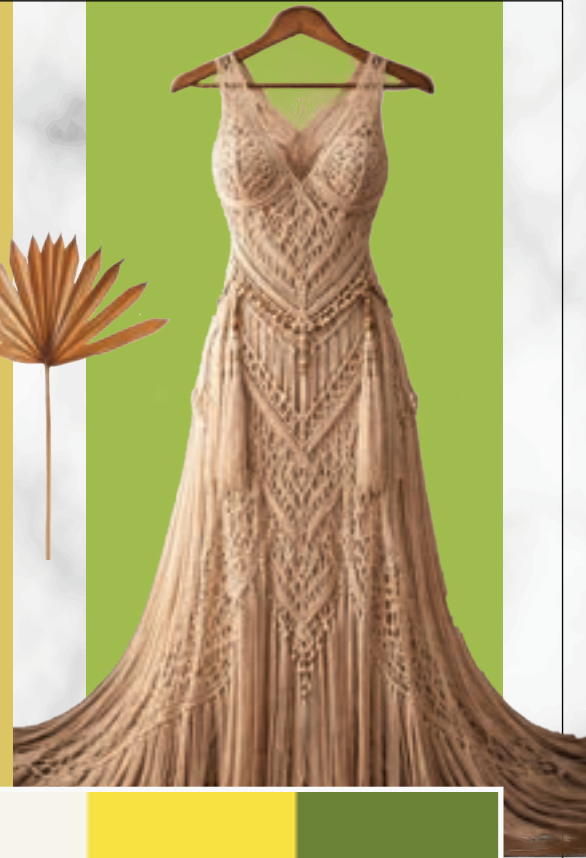
AZMA



Macramé is a form of textile art created by knotting cords or threads to make decorative patterns. It does not require needles or machines, as the designs are made entirely by hand using different types of knots like square knots and half hitch knots.

This craft has its origins in ancient times and became popular among sailors, who used knotting techniques during long voyages. Today, macramé is widely used in home décor and fashion.

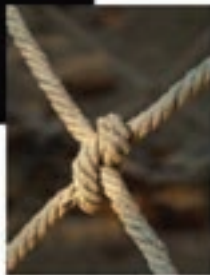
Knots



Knots



We are only as strong as we are united, as weak as we are divided.



ALUMNI DESIGNER



MOHD. MUSTAFEEZ
Batch- 2018





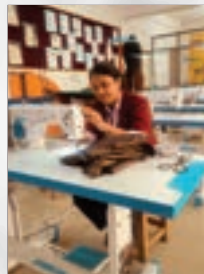
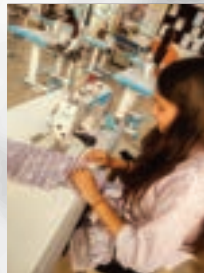
ABOUT THE DEPARTMENT



Dr. Neha Singh
H.O.D.
Department of Design

Department of Fashion, Textile & Interior Design

The Department of Fashion, Textile & Interior Design is a hub of creativity, innovation, and craftsmanship. We offer a dynamic learning environment that blends artistic expression with technical expertise. Our curriculum is designed to balance tradition with modernity, integrating sustainable practices, cutting-edge technology, and industry collaborations. Through hands-on projects, work shops, and real-world exposure, students gain practical experience and a deep understanding of global design trends. With expert faculty, state-of-the-art facilities, and opportunities for exhibitions and fashion shows, our department nurtures visionary designers ready to make an impact in fashion, textiles, and interiors. Whether designing spaces, textiles, or garments, our students are empowered to think beyond boundaries and shape the future of design.



JOURNEY OF 2025-26



Delhi Times Fashion Week



Lakme Fashion Week, Mumbai



NITRA Workshop



National Handloom Day



Workshop on Sewing Machine



Workshop on Textiles by Mr. Akshay Tholia



Workshop on AI Tools in Fashion by Dr. Neetu Malhotra



Alumni Lecture on Careers in Fashion

DESIGN MENTORS



MS. SHRADHA YADAV
ASSISTANT PROFESSOR



MS. ANISHA ANAND
ASSISTANT PROFESSOR



MS. ABHILASHA GARG
ASSISTANT PROFESSOR



MS. DEVSUNI
ASSISTANT PROFESSOR



DR. SURABHI DAS
ASSISTANT PROFESSOR



DR. RASHIKA KASHYAP
ASSISTANT PROFESSOR



MR. CHANDRA SHEKHAR ARYA
ASSISTANT PROFESSOR



MS. SHAILJA SINDHAY
ASSISTANT PROFESSOR



MS. NEETU TEOTIA
ASSISTANT PROFESSOR



MS. MONIKA VERMA
ASSISTANT PROFESSOR



MR. RAGHAVENDRA MOHAN PATHAK
ASSISTANT PROFESSOR

GRAPHIC DESIGN EXECUTIVES



DR. ASHISH KUMAR MISHRA
ASSISTANT PROFESSOR



MR. LUCKY TYAGI
ASSISTANT PROFESSOR



MR. AAKASH BHATNAGAR
ASSISTANT DIRECTOR PPD

Graphic Designer Executives play a key role in developing and managing the visual identity of the organization. They are responsible for creating creative designs of catalogue, posters, banners, and digital content for promotions and events. They coordinate with different teams to understand requirements and ensure timely delivery of designs. With a strong focus on layout, color, and typography, they maintain consistency across all visual materials. Their work helps in effective communication and enhances the overall brand image.

PRINTING & PUBLICITY



MR. AAKASH BHATNAGAR
ASSISTANT DIRECTOR PPD

Publicity and Printing department is responsible for managing all promotional and printed materials for an event. They also handle media publicity content and coordinate with printing vendors to ensure high-quality and timely production. Additionally, they oversee the distribution of all promotional materials, ensuring the event reaches the right audience effectively.

SOCIAL MEDIA & PROMOTIONS



MR. JATIN
ASSISTANT MANAGER MARCOM



MR. DEEPAK
PHOTOGRAPHER MARCOM

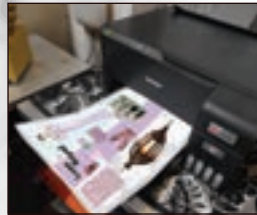
The Social Media coordinators are responsible for managing and promoting the organization's online presence across various platforms. It creates engaging content, including posts, stories, and visuals, to connect with the audience and build a strong brand image. The coordinators ensured timely updates about events, activities, and achievements. It also focuses on creativity, consistency, and audience interaction to increase reach and engagement. The goal was to effectively communicate and showcase the organization's identity in the digital space.



GRAPHIC DESIGNER



ASSISTANT CATALOGUE DESIGNER



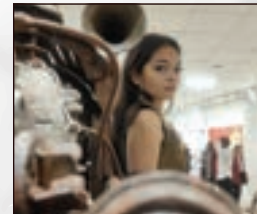
MS. SHRUTI VATS
ASSISTANT PROFESSOR



AADYA AGARWAL
STUDENT



AVNI JAIN
STUDENT



Shubham Kaushik
Photographer





Mr. Kapil Gauhri

Choreographer

Show Director, Design Castle 2026

Mr. Kapil Gauhri is a renowned International Show Director, Fashion Choreographer, and Grooming Expert with vast industry experience. He has directed numerous high-profile fashion shows, collaborating with top designers and brands. Known for model grooming and ramp training, he mentors aspiring talent with a focus on confidence and professionalism. His workshops enhance personality, posture, and stage presence for competitive platforms. With international exposure across Dubai, London, Thailand, Singapore, Malaysia, and Latin America, he brings global standards to his work.

As Show Director for Design Castle 2026, he guides students and elevates the event presentation. His dedication continues to inspire emerging fashion professionals.



SPONSORS



Makeover Partner



Crown & Sash Partner



Photography & Cinematography Partner



Elite Hospitality Partner



Fashion Designer



Promotional Partner



Health & Wellness Partner



Fitness Partner



Broadcast Partner



Brand Amplification Partner



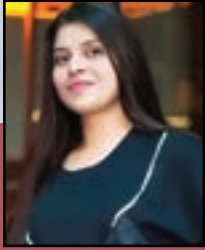
Fashion Designer



Mr. Manish Pal
Lab Technician (Light & Sound)

Mr. Ajay Kumar
Supervisor (Logistic Incharge)

ALUMNI BITES



SHIVANI TOMAR

Assistant Designer in
All Queens and French Connection
Batch: 2017

About: Currently working as a Designer with All Queens and French Connection. I am passionate about creating contemporary fashion that reflects global trends and individuality. My role involves developing designs from concept to final product with attention to detail and quality. Through my work, I aim to bring creativity, innovation, and style into every collection. I continuously explore new ideas, and silhouettes to enhance my design perspective.



AAKASH SIROHI

Senior Merchander
V2 Retail Pvt. Ltd., Delhi
Batch: 2015

About: Working as a Senior Merchandiser has provided me with valuable exposure to the retail industry and its dynamic demands. It has strengthened my understanding of product development, market trends, and consumer preferences. Being in this role allows me to bridge creativity with commercial strategy, ensuring that designs align with both brand vision and customer needs. Through my journey, I continue to enhance my skills in planning, coordination, and execution while maintaining a strong focus on quality and detail.



URVASHI

Assistant Professor in
Dehradun,Subharti University
Batch: 2015

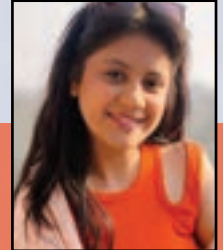
About: As an alumnus of this institution, I received a strong academic foundation that shaped my career in fashion designing. The knowledge, practical exposure, and guidance from faculty played a crucial role in my professional growth. Currently, as an Assistant Professor in Fashion Designing, I apply these learnings to guide and inspire students. The institution has significantly contributed to both my academic excellence and teaching approach. I take pride in being associated with it and continuing its legacy through my profession.



KARN KARDAM

Fashion Designer
Batch: 2012

About: Being a part of the fashion industry has allowed me to explore creativity and build a strong design approach. It has enhanced my understanding of evolving trends, attention to detail, and the importance of innovation in every design. Working in this dynamic environment has given me the opportunity to transform ideas into meaningful creations that balance aesthetics with functionality. Through my journey, I continue to grow as a designer, refining my skills and developing a unique design sensibility.



VISHESH TOMAR

Assistant Designer in
Lifestyle
Batch: 2017

About: Working in a lifestyle company has given me a platform to explore creativity and modern fashion trends. It is a place where innovation meets style, turning ideas into reality. Being a part of this journey is helping me grow as a designer while building a strong sense of aesthetics and passion for fashion. It also gives me exposure to real-world industry practices and helps me understand the importance of detail in every design. This journey is enhancing my creativity, skills, and preparing me for a successful future in the fashion industry.

PROGRAMS UNDER NBSCFF

BFA, MFA

FINE ARTS

- Painting
- Applied Art
- Sculpture

Diploma, U.G., P.G., Ph.D.

BSc, MSc

- Animation
- Interior Design
- Textile Design

**B Design,
M Design**

- Fashion Design
- Design Communication
- Visual Communication
- Luxury Brand Management

BPA, MPA

PERFORMING ARTS

- Kathak
- Vocal
- Sitar
- Guitar

Email id : finearts@subharti.org

Address : Subhartipuram, NH-58, Delhi -Haridwar,Merut Bypass Rd, Meerut, U.P. 250005.

Website: www.subharti.org

9639010066, 9639010177, 9997371772

Industrial Collaboration





DESIGN Castle 2026



ANNUAL FASHION SHOW
ALCHEMY OF TONES

FRIDAY
10
APRIL
2026

ORGANIZED BY -
DEPARTMENT OF FASHION AND TEXTILE DESIGN

NANDLAL BOSE

SUBHARTI COLLEGE OF FINE ARTS AND FASHION DESIGN

— VENUE —
SATYAJIT RAY AUDITORIUM

Subhartipuram, NH-58, Delhi Haridraw Bypass Road,
Meerut, Uttar Pradesh, 250005.

Dr. Rizul Singh

Celebrity Guest

Miss Universe Himachal Pradesh 2025
Miss Universe India 2025 Top 20

Mr. Rishi Bhutani

Celebrity Guest
Bollywood Actor

OUR PROMOTERS

